

# **IndoPacific Mollusc Database**

Build 15  
Date 2004-12-10 15:31:56

# 1. Overview

Revisions		
Version	Date	Description
1.0	2004-12-10 15:14:00	Description of BioLink tables in use in the IndoPacific Mollusc project. Constructed with Druid from MySQL copy of IndoPacific Database. Field lengths and data types may not be accurately reported.

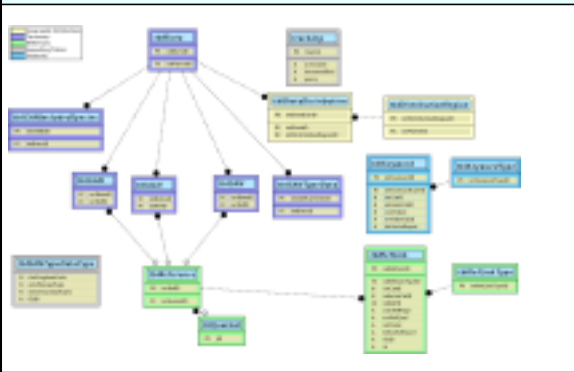
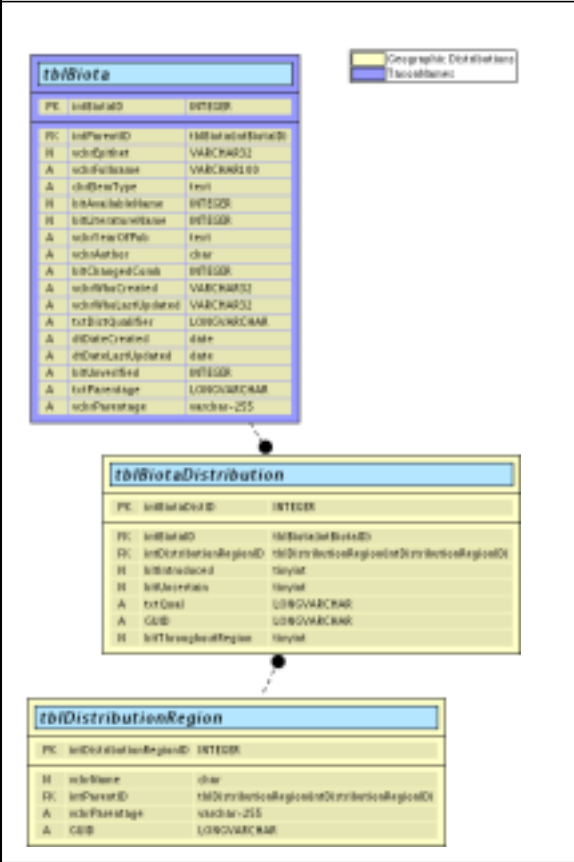
## Other

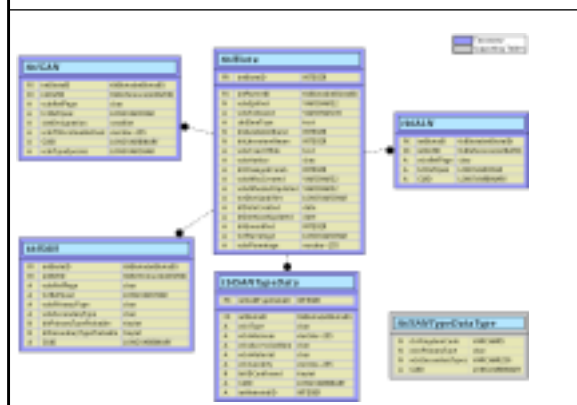
## 2. DataTypes

Constant Types		
Name	Domain	DataD equiv
tinyint		
smallint		
mediumint		
int		
bigint		
float		
double		
decimal		
date		
datetime		
time		
year		
tinytext		
mediumtext		
text		
longtext		
tinyblob		
mediumblob		
blob		
longblob		
enum('a', 'b')		
set('a', 'b')		
INTEGER		
LONGVARCHAR		
LONGVARBINARY		

Variable Types			
Name	Size	Domain	DataD equiv
<b>float</b>	n/a	n/a	n/a
float(4,2)	4,2		
<b>double</b>	n/a	n/a	n/a
double(8,4)	8,4		
<b>decimal</b>	n/a	n/a	n/a
salary	9,2		
<b>timestamp</b>	n/a	n/a	n/a
yy	2		
yy-mm	4		
yy-mm-dd	6		
yyyy-mm-dd	8		
yy-mm-dd-hh-mm	10		
yy-mm-dd-hh-mm-ss	12		
yyyy-mm-dd-hh-mm-ss	14		
TIMESTAMP19	19		
<b>char</b>	n/a	n/a	n/a
char	1		
bool	1		
bit	1		
CHAR100	100		
<b>varchar</b>	n/a	n/a	n/a
varchar-255	255		
VARCHAR50	50		
VARCHAR32	32		
VARCHAR100	100		
VARCHAR10	10		
VARCHAR20	20		
VARCHAR200	200		
VARCHAR30	30		
VARCHAR5	5		
VARCHAR250	250		
VARCHAR15	15		

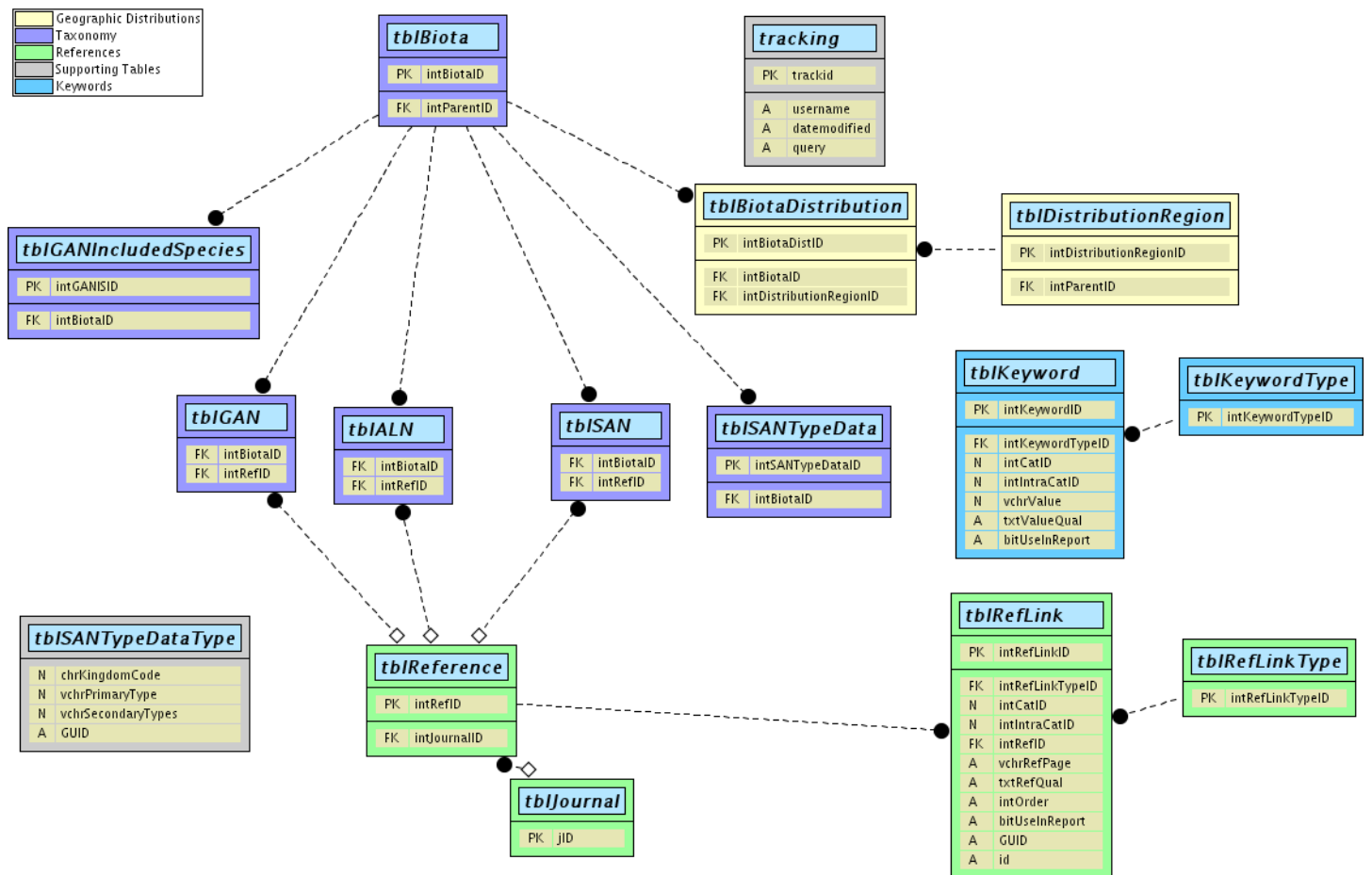
### 3. ER Views

ER View	Description
	<p>Overview of BioLink table structure used by the IndoPacific Mollusc database.</p> <p>Keywords are linked to arbitrary tables through the intCatID field, which indicates the table that is being linked to, and intIntraCatID, which is a Foreign Key pointing to the primary key of the table indicated in the intCatID field. References are linked to arbitrary tables in a similar way, with tblRefLink.intCatID indicating the table and intIntraCatID being a foreign key.</p>
	<p>Storage of Geographic Distribution information in the IndoPacific Mollusc database.</p>
	<p>Storage of Taxonomic and nomenclatural information in the IndoPacific Mollusc Database.</p>



Storage of bibliographic citations. Note that various tables in the Taxonomy section link directly to tblReference, while tblRefLink is an associative entity allowing tblReference to be linked to other arbitrary tables through intCatID (specifies table) and intIntraCatID (foreign key). Most of the tblRefLink entries in the IndoPacific Mollusc database point to tblKeyword (indicating the source for a keyword), or to tblBiotaDistribution (an OBIS data entry toolkit extension of BioLink that allows tblBiotaDistribution to associate distributions, taxa, and the source of the information for that distribution).

## 4. indopacific



## 1. tracking

tracking	
PK	trackid
A	username
A	datemodified
A	query

### Used tables

tracking

## 4.2. tblBiota

<i>tblBiota</i>	
PK	intBiotaID
FK	intParentID

### Used tables

tblBiota

## 4.3. tblALN

<i>tblALN</i>	
FK	intBiotaID
FK	intRefID

### Used tables

tblALN

## 4.4. tblBiotaDistribution

<i>tblBiotaDistribution</i>	
PK	intBiotaDistID
FK	intBiotaID
FK	intDistributionRegionID

### Used tables

tblBiotaDistribution

## 4.5. tblDistributionRegion

<i>tblDistributionRegion</i>	
PK	intDistributionRegionID
FK	intParentID



**Used tables**

tblDistributionRegion

## 4.6. tblReference

<i>tblReference</i>	
PK	intRefID
FK	intJournalID

**Used tables**

tblReference

## 4.7. tblIGAN

<i>tblIGAN</i>	
FK	intBiotatID
FK	intRefID

**Used tables**

tblIGAN

## 4.8. tblISAN

<i>tblISAN</i>	
FK	intBiotatID
FK	intRefID

**Used tables**

tblISAN

## 4.9. tblIGANIncludedSpecies

<i>tblGANIncludedSpecies</i>	
PK	intGANISID
FK	intBiotID

**Used tables**

tblGANIncludedSpecies

## 4.10. tblSANTypeData

<i>tblSANTypeData</i>	
PK	intSANTypeDataID
FK	intBiotID

**Used tables**

tblSANTypeData

## 4.11. tblJournal

<i>tblJournal</i>	
PK	jID

**Used tables**

tblJournal

## 4.12. tblKeyword

<i>tblKeyword</i>	
PK	intKeywordID
FK	intKeywordTypeID
N	intCatID
N	intIntraCatID
N	vchrValue
A	txtValueQual
A	bitUseInReport

**Used tables**

tblKeyword

## 4.13. tblKeywordType

<i>tblKeywordType</i>	
PK	intKeywordTypeID

**Used tables**

tblKeywordType

## 4.14. tblRefLink

<i>tblRefLink</i>	
PK	intRefLinkID
FK	intRefLinkTypeID
N	intCatID
N	intIntraCatID
FK	intRefID
A	vchrRefPage
A	txtRefQual
A	intOrder
A	bitUseInReport
A	GUID
A	id

**Used tables**

tblRefLink

## 4.15. tblRefLinkType

<i>tblRefLinkType</i>	
PK	intRefLinkTypeID

**Used tables**

tblRefLinkType

## 4.16. tblSANTypeDataType

<i>tblSANTypeDataType</i>	
N	chrKingdomCode
N	vchrPrimaryType
N	vchrSecondaryTypes
A	GUID

**Used tables**

tblSANTypeDataType

## 5. distributions

### 1. tblBiota

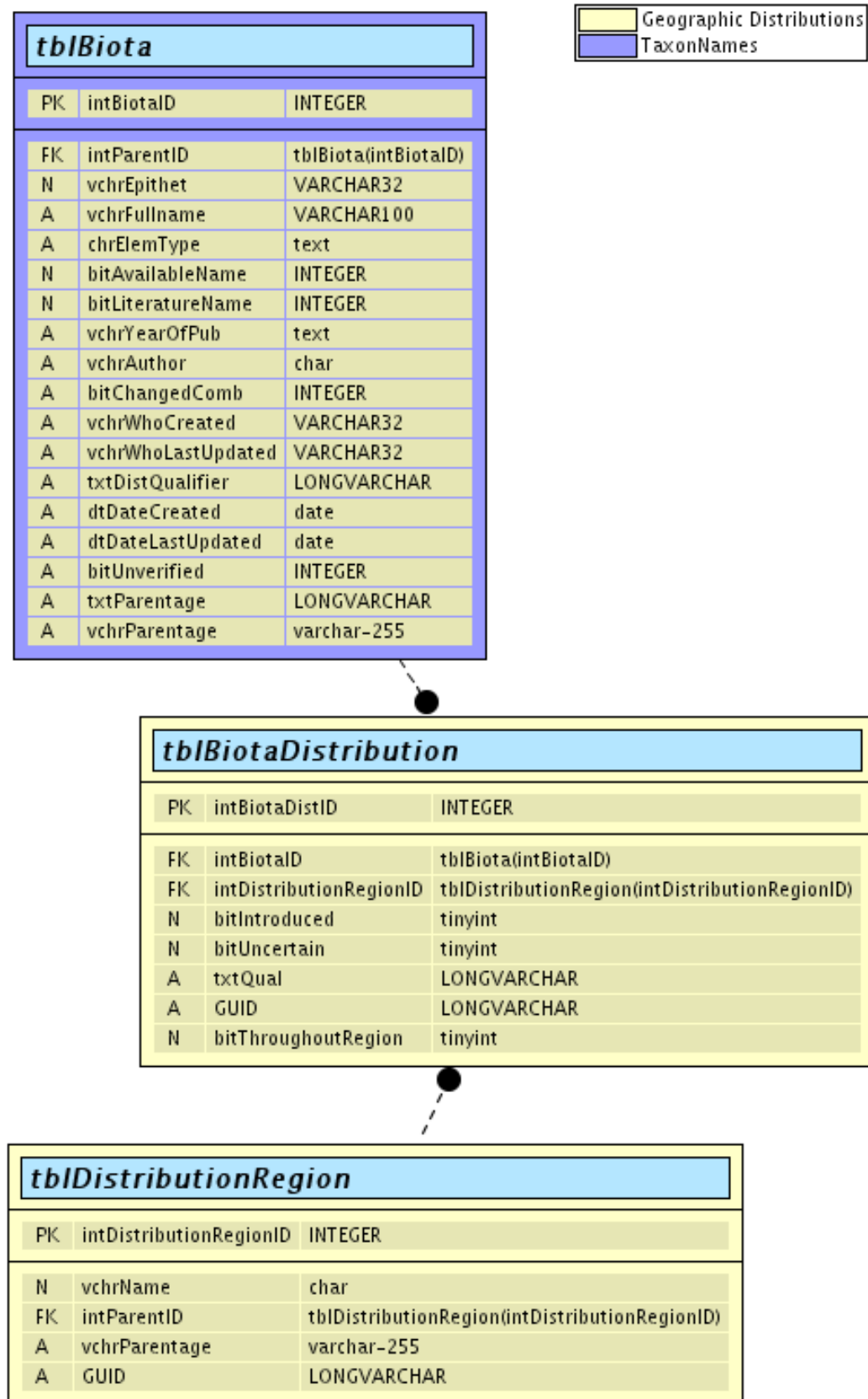
<i>tblBiota</i>		
PK	intBiotaID	INTEGER
FK	intParentID	tblBiota(intBiotaID)
N	vchrEpithet	VARCHAR32
A	vchrFullName	VARCHAR100
A	chrElemType	text
N	bitAvailableName	INTEGER
N	bitLiteratureName	INTEGER
A	vchrYearOfPub	text
A	vchrAuthor	char
A	bitChangedComb	INTEGER
A	vchrWhoCreated	VARCHAR32
A	vchrWhoLastUpdated	VARCHAR32
A	txtDistQualifier	LONGVARCHAR
A	dtDateCreated	date
A	dtDateLastUpdated	date
A	bitUnverified	INTEGER
A	txtParentage	LONGVARCHAR
A	vchrParentage	varchar-255

#### Used tables

tblBiota

### 5.2. tblBiotaDistribution

<i>tblBiotaDistribution</i>		
PK	intBiotaDistID	INTEGER
FK	intBiotaID	tblBiota(intBiotaID)
FK	intDistributionRegionID	tblDistributionRegion(intDistributionRegionID)
N	bitIntroduced	tinyint
N	bitUncertain	tinyint
A	txtQual	LONGVARCHAR
A	GUID	LONGVARCHAR
N	bitThroughoutRegion	tinyint



**Used tables**

tblBiotaDistribution

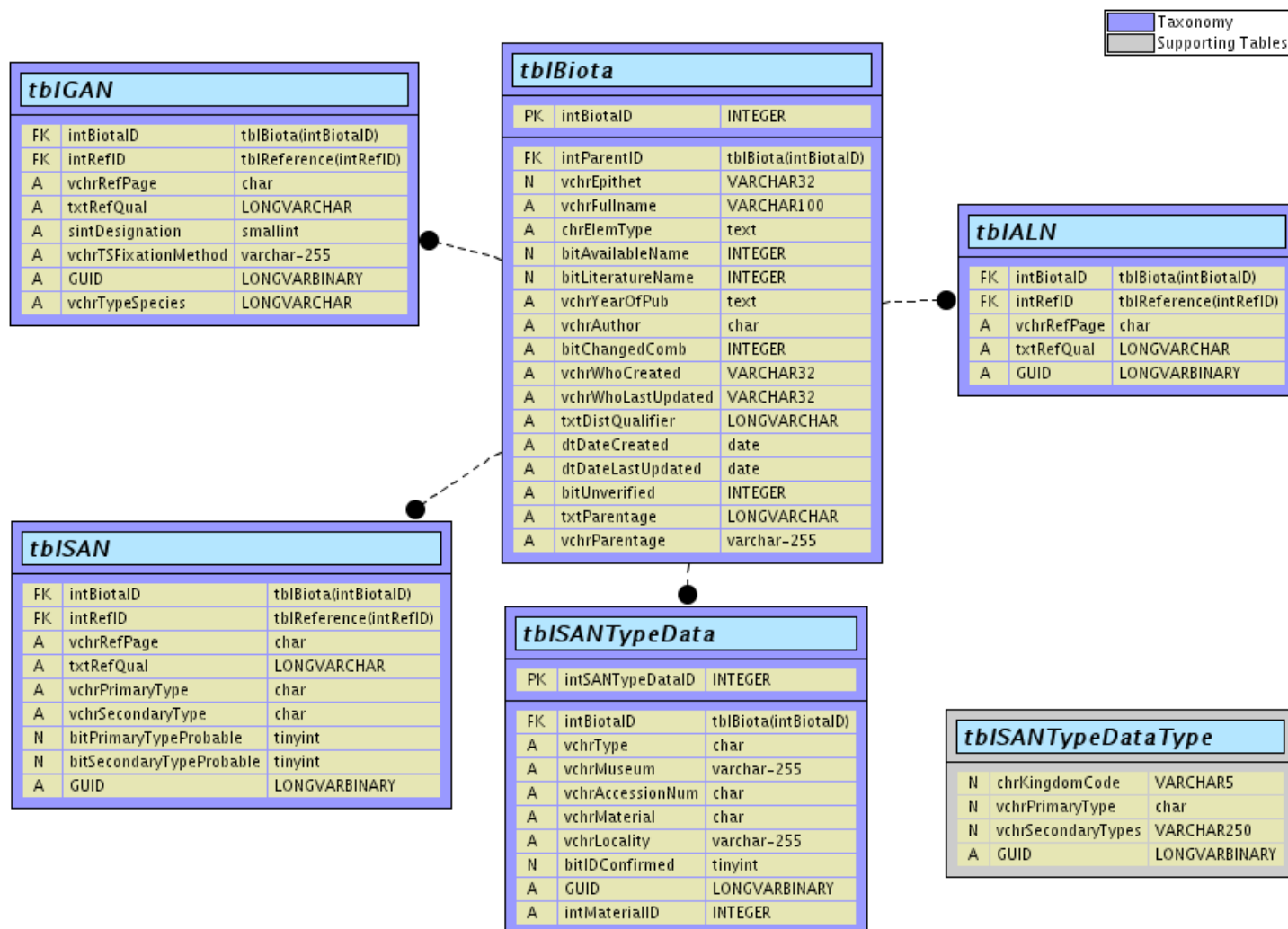
## 5.3. tblDistributionRegion

<i>tblDistributionRegion</i>		
PK	intDistributionRegionID	INTEGER
N	vchrName	char
FK	intParentID	tblDistributionRegion(intDistributionRegionID)
A	vchrParentage	varchar-255
A	GUID	LONGVARCHAR

**Used tables**

tblDistributionRegion

## 6. Taxonomy



### 1. tblBiota

Used tables

tblBiota

### 6.2. tblIALN



<b>tblBiota</b>		
PK	intBiotaID	INTEGER
FK	intParentID	tblBiota(intBiotaID)
N	vchrEpithet	VARCHAR32
A	vchrFullname	VARCHAR100
A	chrElemType	text
N	bitAvailableName	INTEGER
N	bitLiteratureName	INTEGER
A	vchrYearOfPub	text
A	vchrAuthor	char
A	bitChangedComb	INTEGER
A	vchrWhoCreated	VARCHAR32
A	vchrWhoLastUpdated	VARCHAR32
A	txtDistQualifier	LONGVARCHAR
A	dtDateCreated	date
A	dtDateLastUpdated	date
A	bitUnverified	INTEGER
A	txtParentage	LONGVARCHAR
A	vchrParentage	varchar-255

<b>tblALN</b>		
FK	intBiotaID	tblBiota(intBiotaID)
FK	intRefID	tblReference(intRefID)
A	vchrRefPage	char
A	txtRefQual	LONGVARCHAR
A	GUID	LONGVARBINARY

#### Used tables

tblALN

## 6.3. tblIGAN

<b>tblIGAN</b>		
FK	intBiotaID	tblBiota(intBiotaID)
FK	intRefID	tblReference(intRefID)
A	vchrRefPage	char
A	txtRefQual	LONGVARCHAR
A	sintDesignation	smallint
A	vchrTSFixationMethod	varchar-255
A	GUID	LONGVARBINARY
A	vchrTypeSpecies	LONGVARCHAR

**Used tables**

tbISAN

## 6.4. tbISAN

<i>tbISAN</i>		
FK	intBiotalID	tblBiota(intBiotalID)
FK	intRefID	tblReference(intRefID)
A	vchrRefPage	char
A	txtRefQual	LONGVARCHAR
A	vchrPrimaryType	char
A	vchrSecondaryType	char
N	bitPrimaryTypeProbable	tinyint
N	bitSecondaryTypeProbable	tinyint
A	GUID	LONGVARBINARY

**Used tables**

tbISAN

## 6.5. tblSANTypeData

<i>tblSANTypeData</i>		
PK	intSANTypeDataID	INTEGER
FK	intBiotalID	tblBiota(intBiotalID)
A	vchrType	char
A	vchrMuseum	varchar-255
A	vchrAccessionNum	char
A	vchrMaterial	char
A	vchrLocality	varchar-255
N	bitIDConfirmed	tinyint
A	GUID	LONGVARBINARY
A	intMaterialID	INTEGER

**Used tables**

tblSANTypeData

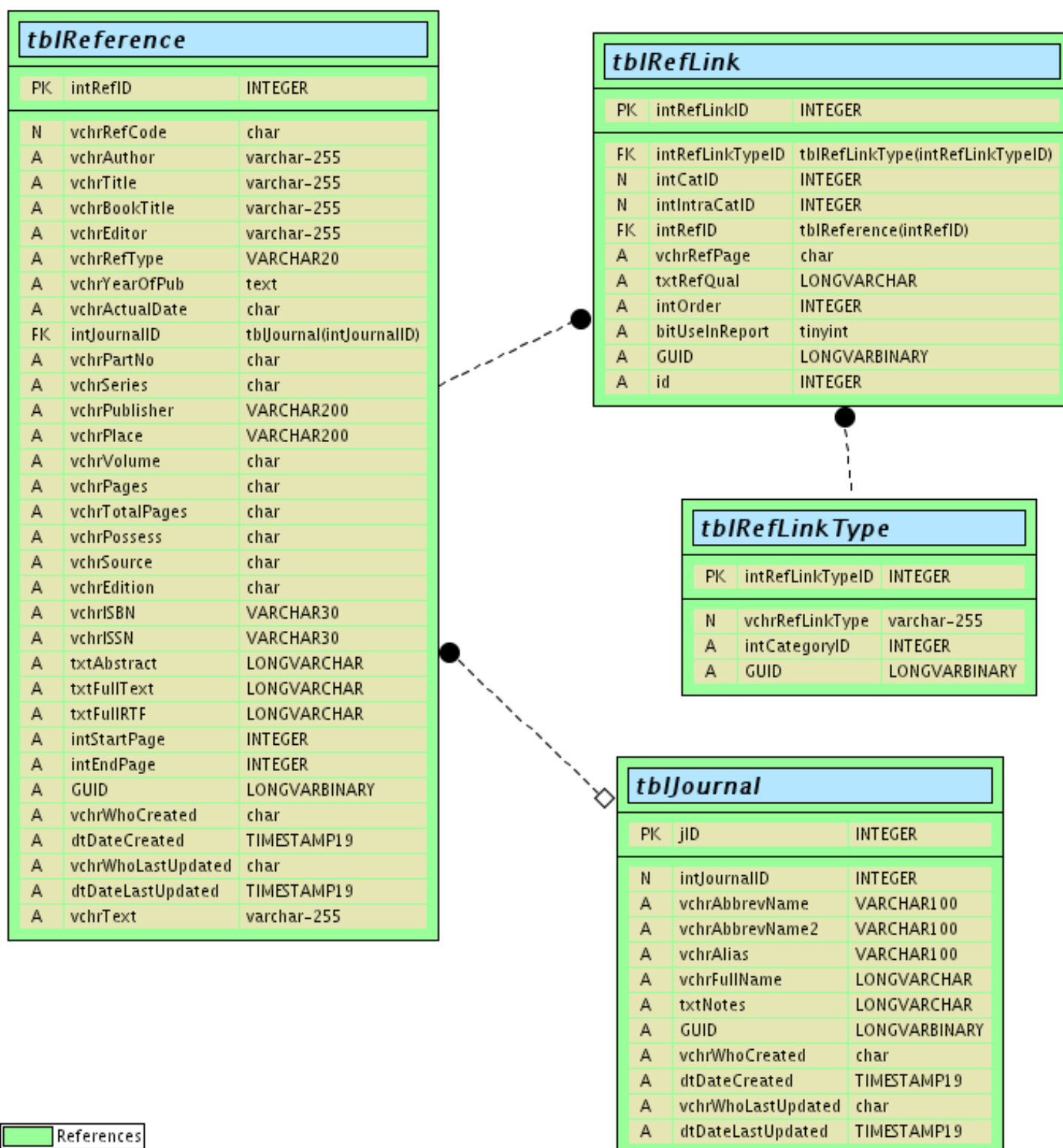
## 6.6. tblSANTypeDataType

<i>tblSANTypeDataType</i>		
N	chrKingdomCode	VARCHAR5
N	vchrPrimaryType	char
N	vchrSecondaryTypes	VARCHAR250
A	GUID	LONGVARBINARY

### Used tables

tblSANTypeDataType

## 7. References



# 1. tblReference

<i>tblReference</i>		
PK	intRefID	INTEGER
N	vchrRefCode	char
A	vchrAuthor	varchar-255
A	vchrTitle	varchar-255
A	vchrBookTitle	varchar-255
A	vchrEditor	varchar-255
A	vchrRefType	VARCHAR20
A	vchrYearOfPub	text
A	vchrActualDate	char
FK	intJournalID	tblJournal(intJournalID)
A	vchrPartNo	char
A	vchrSeries	char
A	vchrPublisher	VARCHAR200
A	vchrPlace	VARCHAR200
A	vchrVolume	char
A	vchrPages	char
A	vchrTotalPages	char
A	vchrPossess	char
A	vchrSource	char
A	vchrEdition	char
A	vchrISBN	VARCHAR30
A	vchrISSN	VARCHAR30
A	txtAbstract	LONGVARCHAR
A	txtFullText	LONGVARCHAR
A	txtFullRTF	LONGVARCHAR
A	intStartPage	INTEGER
A	intEndPage	INTEGER
A	GUID	LONGVARBINARY
A	vchrWhoCreated	char
A	dtDateCreated	TIMESTAMP19
A	vchrWhoLastUpdated	char
A	dtDateLastUpdated	TIMESTAMP19
A	vchrText	varchar-255

## Used tables

tblReference

## 7.2. tblRefLink

<i>tblRefLink</i>		
PK	intRefLinkID	INTEGER
FK	intRefLinkTypeID	tblRefLinkType(intRefLinkTypeID)
N	intCatID	INTEGER
N	intIntraCatID	INTEGER
FK	intRefID	tblReference(intRefID)
A	vchrRefPage	char
A	txtRefQual	LONGVARCHAR
A	intOrder	INTEGER
A	bitUseInReport	tinyint
A	GUID	LONGVARBINARY
A	id	INTEGER

#### Used tables

tblRefLink

## 7.3. tblRefLinkType

<i>tblRefLinkType</i>		
PK	intRefLinkTypeID	INTEGER
N	vchrRefLinkType	varchar-255
A	intCategoryID	INTEGER
A	GUID	LONGVARBINARY

#### Used tables

tblRefLinkType

## 7.4. tblJournal

#### Used tables

tblJournal

<b>tblJournal</b>		
PK	jID	INTEGER
N	intJournalID	INTEGER
A	vchrAbbrevName	VARCHAR100
A	vchrAbbrevName2	VARCHAR100
A	vchrAlias	VARCHAR100
A	vchrFullName	LONGVARCHAR
A	txtNotes	LONGVARCHAR
A	GUID	LONGVARBINARY
A	vchrWhoCreated	char
A	dtDateCreated	TIMESTAMP19
A	vchrWhoLastUpdated	char
A	dtDateLastUpdated	TIMESTAMP19

## 8. IndoPacific Mollusc Database

Summary documentation of table structures used to store data about names and geographic distribution of Indo-Pacific molluscs in the OBIS Indo-Pacific Mollusc project. The table structures follow those of CSIRO's BioLink, as the data are stored in a BioLink database with additions for the OBIS data entry tool kit, such as tracking of all edits to records (since the introduction of that feature in the OBIS data entry toolkit).

### 1. tracking

Tracking is an additional table added to support the OBIS data entry toolkit beyond the tables present in a BioLink database. Tracking stores queries that alter the information in tblBiota.

<b>Field Summary</b>		
Name	Type	Description
trackid	INTEGER	
username	VARCHAR15	
datemodified	date	
query	LONGVARCHAR	

<b>Sql Summary</b>																	
Name	Type	Pr Ke y	Un q	Not N	Def	Aut oIn cr	Bin	Un Sig n	Zer oFi ll	MU nq	Idx 1	Ud x1	Idx 1	Idx 2	Idx 3	Idx 4	Idx 5
trackid	INTEGER	x	-	-		-	-	-	-	-	-	-	-	-	-	-	-

## Sql Summary

Name	Type	Pr Key	Un q	Not N	Def	Aut oIn cr	Bin	Un Sig n	Zer oFi ll	MU nq	Idx 1	Ud x1	Idx 1	Idx 2	Idx 3	Idx 4	Idx 5
username	varchar(15)	-	-	-		-	-	-	-	-	-	-	-	-	-	-	-
datemodified	date	-	-	-		-	-	-	-	-	-	-	-	-	-	-	-
query	LONGVARCHAR	-	-	-		-	-	-	-	-	-	-	-	-	-	-	-

## 8.2. tblBiota

The core table for taxonomic and nomenclatural information. Records in this table are of one of three types, probably valid names in current use are marked with bitAvailableName=0 and bitLiteratureName=0. These names are associated with biological information. Available names (which may or may not be available under the ICZN) are nomenclatural actions that could potentially create new available (sensu ICZN) names. Available names are the entries that you would find in a synonymy. Literature names are changed combinations, misspellings, and pre-linnean names that do not have the ability to create new names. Literature names might be found in a chresonymy or extended synonymy.

### See Also

tblBiota  
tblALN  
tblBiotaDistribution  
tblIGAN  
tblIGANIncludedSpecies  
tblISAN  
tblISANTypeData

## Field Summary

Name	Type	Description
<b>intBiotalD</b>	INTEGER	
<i>intParentID</i>	tblBiota(intBiotalD)	Rows in tblBiota are linked into a single taxonomic hierarchy by intParentID->intBiotalD links.
vchrEpithet	VARCHAR32	Should contain the taxon name for subgenera and higher and the trival epithet for species and subspecies
vchrFullname	VARCHAR100	Full assembled taxon name without author and year.
chrElemType	text	Code for the rank of the taxon.
bitAvailableName	INTEGER	0 = not an "Available name"



		-1 = "AvailableName"
bitLiteratureName	INTEGER	0 = not an "Literature name" -1 = "Literature Name"
vchrYearOfPub	text	Year of publication of the name
vchrAuthor	char	Authorship string for the name
bitChangedComb	INTEGER	Is this a changed combination
vchrWhoCreated	VARCHAR32	Creator of this record
vchrWhoLastUpdated	VARCHAR32	Last updater of this record. See tracking for other edits.
txtDistQualifier	LONGVARCHAR	Text description of the geographic distribution of a taxon.
dtDateCreated	date	Date the record was created
dtDateLastUpdated	date	Date the record was last updated. See tracking for other edits.
bitUnverified	INTEGER	
txtParentage	LONGVARCHAR	Denormalised list of parents of this taxon up to the root of the taxon tree.
vchrParentage	varchar-255	

## Sql Summary

Name	Type	Pr Ke y	Un q	Not N	Def	Aut oIn cr	Bin	Un Sig n	Zer oFi ll	MU nq	Idx 1	Ud x1	Idx 1	Idx 2	Idx 3	Idx 4	Idx 5
intBiotID	INTEGER	x	-	x	0	-	-	-	-	-	-	x	-	-	-	-	-
intParentID	INTEGER	-	-	x	0	x	-	-	-	-	-	-	-	x	-	-	-
vchrEpithet	varchar(32)	-	-	x		-	-	-	x	-	-	-	-	-	-	-	x
vchrFullname	varchar(100)	-	-	-		-	-	x	-	-	-	-	-	-	-	x	-
chrElemType	text	-	-	-		-	-	-	-	-	-	-	-	-	-	-	-
bitAvailableName	INTEGER	-	-	x	0	-	-	-	-	-	-	-	-	-	-	-	-
bitLiteratureName	INTEGER	-	-	x	0	-	-	-	-	-	-	-	-	-	-	-	-
vchrYearOfPub	text	-	-	-		-	x	-	-	-	-	-	-	-	x	-	-
vchrAuthor	char(1)	-	-	-		-	-	-	-	-	-	-	-	-	-	-	-

## Sql Summary

Name	Type	Pr Key	Un q	Not N	Def	Aut oln cr	Bin	Un Sig n	Zer oFi ll	MU nq	Idx 1	Ud x1	Idx 1	Idx 2	Idx 3	Idx 4	Idx 5
bitChangedComb	INTEGER	-	-	-		-	-	-	-	-	-	-	-	-	-	-	-
vchrWhoCreated	varchar(32)	-	-	-		-	-	-	-	-	-	-	-	-	-	-	-
vchrWhoLastUpdated	varchar(32)	-	-	-		-	-	-	-	-	-	-	-	-	-	-	-
txtDistQualifier	LONGVARCHAR	-	-	-		-	-	-	-	-	-	-	-	-	-	-	-
dtDateCreated	date	-	-	-		-	-	-	-	-	-	-	-	-	-	-	-
dtDateLastUpdated	date	-	-	-		-	-	-	-	-	-	-	-	-	-	-	-
bitUnverified	INTEGER	-	-	-		-	-	-	-	-	-	-	-	-	-	-	-
txtParentage	LONGVARCHAR	-	-	-		-	-	-	-	-	-	-	-	-	-	-	-
vchrParentage	varchar(255)	-	-	-		-	-	-	-	-	-	-	x	-	-	-	-

## Foreign Keys

Name	Import	On Update	On Delete
intParentID	tblBiota(intBiotaID)	NO ACTION	NO ACTION

## 8.3. tblALN

Information about the publication of available names of higher taxa.

## Field Summary

Name	Type	Description
<i>intBiotaID</i>	tblBiota(intBiotaID)	
<i>intRefID</i>	tblReference(intRefID)	
vchrRefPage	char	
txtRefQual	LONGVARCHAR	
GUID	LONGVARBINARY	

## Sql Summary

Name	Type	Pr Key	Un q	Not N	Def	Aut oln cr	Bin	Un Sig n	Zer oFi ll	MU nq	Idx 1	Ud x1	Idx 1	Idx 2	Idx 3	Idx 4	Idx 5
<i>intBiotalID</i>	INTEGER	-	-	x	0	-	-	-	-	-	-	-	-	-	-	-	-
<i>intRefID</i>	INTEGER	-	-	-		-	-	-	-	-	-	-	-	-	-	-	-
<i>vchrRefPage</i>	char(1)	-	-	-		-	-	-	-	-	-	-	-	-	-	-	-
<i>txtRefQual</i>	LONGVARCH AR	-	-	-		-	-	-	-	-	-	-	-	-	-	-	-
GUID	LONGVARB INARY	-	-	-		-	-	-	-	-	-	-	-	-	-	-	-

## Foreign Keys

Name	Import	On Update	On Delete
<i>intBiotalID</i>	tblBiota( <i>intBiotalID</i> )	NO ACTION	NO ACTION
<i>intRefID</i>	tblReference( <i>intRefID</i> )	NO ACTION	NO ACTION

## 8.4. tblBiotaDistribution

Associative entity linking Taxon names to geographic occurrence regions.

## Field Summary

Name	Type	Description
<b>intBiotaDistID</b>	INTEGER	
<i>intBiotalID</i>	tblBiota( <i>intBiotalID</i> )	
<i>intDistributionRegionID</i>	tblDistributionRegion( <i>intDistr ibutionRegionID</i> )	
bitIntroduced	tinyint	
bitUncertain	tinyint	
txtQual	LONGVARCHAR	
GUID	LONGVARCHAR	
bitThroughoutRegion	tinyint	

## Sql Summary

Name	Type	Pr Key	Un q	Not N	Def	Aut oln cr	Bin	Un Sig n	Zer oFi ll	MU nq	Idx 1	Ud x1	Idx 1	Idx 2	Idx 3	Idx 4	Idx 5
intBiotaDistID	INTEGER	x	-	-	0	-	-	-	-	-	-	-	-	-	-	-	-
intBiotaID	INTEGER	-	-	x	0	x	-	-	-	-	-	-	-	x	-	-	-
intDistributionRegionID	INTEGER	-	-	x	0	-	-	-	-	-	-	-	x	-	-	-	-
bitIntroduced	tinyint	-	-	x	0	-	-	-	-	-	-	-	-	-	-	-	-
bitUncertain	tinyint	-	-	x	0	-	-	-	-	-	-	-	-	-	-	-	-
txtQual	LONGVARCHAR	-	-	-		-	-	-	-	-	-	-	-	-	-	-	-
GUID	LONGVARCHAR	-	-	-		-	-	-	-	-	-	-	-	-	-	-	-
bitThroughoutRegion	tinyint	-	-	x	0	-	-	-	-	-	-	-	-	-	-	-	-

## Foreign Keys

Name	Import	On Update	On Delete
intBiotaID	tblBiota(intBiotaID)	NO ACTION	NO ACTION
intDistributionRegionID	tblDistributionRegion(intDistributionRegionID)	NO ACTION	NO ACTION

## 8.5. tblDistributionRegion

A heirarchical list of geographic regions. The IndoPacific Mollusc project compiled a list of some 3000 geographic regions of various ranks from tropical-indo west pacific down to individual islands.

### See Also

tblBiotaDistribution  
tblDistributionRegion

## Field Summary

Name	Type	Description

<b>intDistributionRegionID</b>	INTEGER	
vchrName	char	
<i>intParentID</i>	tblDistributionRegion(intDistributionRegionID)	
vchrParentage	varchar-255	
GUID	LONGVARCHAR	

## Sql Summary

Name	Type	Pr Key	Un q	Not N	Def	Aut olncr	Bin	Un Sign	Zer oFill	MU nq	Idx 1	Udx1	Idx 1	Idx 2	Idx 3	Idx 4	Idx 5
<b>intDistributionRegionID</b>	INTEGER	x	-	-	0	-	-	-	-	-	-	-	-	-	-	-	-
vchrName	char(1)	-	-	x		-	x	-	-	-	-	-	-	-	x	-	-
<i>intParentID</i>	INTEGER	-	-	-		x	-	-	-	-	-	-	-	x	-	-	-
vchrParentage	varchar(255)	-	-	-		-	-	-	-	-	-	-	x	-	-	-	-
GUID	LONGVARCHAR	-	-	-		-	-	-	-	-	-	-	-	-	-	-	-

## Foreign Keys

Name	Import	On Update	On Delete
intParentID	tblDistributionRegion(intDistributionRegionID)	NO ACTION	NO ACTION

## 8.6. tblGAN

Information about Available names of generic rank.

## Field Summary

Name	Type	Description
<i>intBiotID</i>	tblBiota(intBiotID)	
<i>intRefID</i>	tblReference(intRefID)	
vchrRefPage	char	

txtRefQual	LONGVARCHAR	
sintDesignation	smallint	
vchrTSFixationMethod	varchar-255	
GUID	LONGVARBINARY	
vchrTypeSpecies	LONGVARCHAR	

## Sql Summary

Name	Type	Pr Key	Un q	Not N	Def	Aut incr	Bin	Un Sig n	Zer oFi ll	MU nq	Idx 1	Ud x1	Idx 1	Idx 2	Idx 3	Idx 4	Idx 5
<i>intBiotalID</i>	INTEGER	-	-	x	0	-	-	-	-	-	-	-	-	-	-	-	-
<i>intRefID</i>	INTEGER	-	-	-		-	-	-	-	-	-	-	-	-	-	-	-
vchrRefPage	char(1)	-	-	-		-	-	-	-	-	-	-	-	-	-	-	-
txtRefQual	LONGVARCH AR	-	-	-		-	-	-	-	-	-	-	-	-	-	-	-
sintDesignation	smallint	-	-	-		-	-	-	-	-	-	-	-	-	-	-	-
vchrTSFixation Method	varchar(255)	-	-	-		-	-	-	-	-	-	-	-	-	-	-	-
GUID	LONGVARB INARY	-	-	-		-	-	-	-	-	-	-	-	-	-	-	-
vchrTypeSpeci es	LONGVARCH AR	-	-	-		-	-	-	-	-	-	-	-	-	-	-	-

## Foreign Keys

Name	Import	On Update	On Delete
intBiotalID	tblBiota(intBiotalID)	NO ACTION	NO ACTION
intRefID	tblReference(intRefID)	NO ACTION	NO ACTION

## 8.7. tblGANIncludedSpecies

Lists of species included in a genus in original designation.

## Field Summary

Name	Type	Description
<b>intGANISID</b>	INTEGER	
<i>intBiotID</i>	tblBiota(intBiotID)	
GUID	LONGVARBINARY	
vchrIncludedSpecies	varchar-255	

## Sql Summary

Name	Type	Pr Ke y	Un q	Not N	Def	Aut oIn cr	Bin	Un Sig n	Zer oFi ll	MU nq	Idx 1	Ud x1	Idx 1	Idx 2	Idx 3	Idx 4	Idx 5
<b>intGANISID</b>	INTEGER	x	-	x	0	-	-	-	-	-	-	-	-	-	-	-	-
<i>intBiotID</i>	INTEGER	-	-	x	0	-	-	-	-	-	-	-	-	-	-	-	-
GUID	LONGVARBINARY	-	-	-		-	-	-	-	-	-	-	-	-	-	-	-
vchrIncludedSpecies	varchar(255)	-	-	-		-	-	-	-	-	-	-	-	-	-	-	-

## Foreign Keys

Name	Import	On Update	On Delete
intBiotID	tblBiota(intBiotID)	NO ACTION	NO ACTION

## 8.8. tblJournal

Information about Serial publications such as Journals.

### See Also

tblReference

## Field Summary

Name	Type	Description
intJournalID	INTEGER	
vchrAbbrevName	VARCHAR100	
vchrAbbrevName2	VARCHAR100	
vchrAlias	VARCHAR100	

vchrFullName	LONGVARCHAR	
txtNotes	LONGVARCHAR	
GUID	LONGVARBINARY	
vchrWhoCreated	char	
dtDateCreated	TIMESTAMP19	
vchrWhoLastUpdated	char	
dtDateLastUpdated	TIMESTAMP19	
jID	INTEGER	

## Sql Summary

Name	Type	Pr Ke y	Un q	Not N	Def	Aut oIn cr	Bin	Un Sig n	Zer oFi ll	MU nq	Idx 1	Ud x1	Idx 1	Idx 2	Idx 3	Idx 4	Idx 5
intJournalID	INTEGER	-	-	x	0	-	-	-	-	-	-	-	x	-	-	-	-
vchrAbbrevName	varchar(100)	-	-	-		-	-	-	-	-	-	-	-	-	-	-	-
vchrAbbrevName2	varchar(100)	-	-	-		-	-	-	-	-	-	-	-	-	-	-	-
vchrAlias	varchar(100)	-	-	-		-	-	-	-	-	-	-	-	-	-	-	-
vchrFullName	LONGVARCH AR	-	-	-		-	-	-	-	-	-	-	-	-	-	-	-
txtNotes	LONGVARCH AR	-	-	-		-	-	-	-	-	-	-	-	-	-	-	-
GUID	LONGVARB INARY	-	-	-		-	-	-	-	-	-	-	-	-	-	-	-
vchrWhoCreated	char(1)	-	-	-		-	-	-	-	-	-	-	-	-	-	-	-
dtDateCreated	timestamp(1 9)	-	-	-		-	-	-	-	-	-	-	-	-	-	-	-
vchrWhoLastUpdated	char(1)	-	-	-		-	-	-	-	-	-	-	-	-	-	-	-
dtDateLastUpdated	timestamp(1 9)	-	-	-		-	-	-	-	-	-	-	-	-	-	-	-
jID	INTEGER	x	-	-		-	-	-	-	-	-	-	-	-	-	-	-



## 8.9. tblKeyword

Keywords that can be linked to arbitrary tables

Field Summary		
Name	Type	Description
intKeywordID	INTEGER	
intKeywordTypeID	tblKeywordType(intKeywordTypeID)	
intCatID	INTEGER	Indicator of which table the keyword is linked to.
intIntraCatID	INTEGER	Foreign key pointing to an arbitrary table as indicated by the value in the intCatID field for an instance.
vchrValue	varchar-255	The keyword
txtValueQual	LONGVARCHAR	A text qualifier of the keyword.
bitUseInReport	tinyint	

Sql Summary																	
Name	Type	Pr Key	Un q	Not N	Def	Aut oIn cr	Bin	Un Sig n	Zer oFi ll	MU nq	Idx 1	Ud x1	Idx 1	Idx 2	Idx 3	Idx 4	Idx 5
intKeywordID	INTEGER	x	-	-	0	-	-	-	-	-	-	-	-	-	-	-	-
intKeywordTypeID	INTEGER	-	-	x	0	x	-	-	-	-	-	-	-	x	-	-	-
intCatID	INTEGER	-	-	x	0	-	x	-	-	-	-	-	-	-	x	-	-
intIntraCatID	INTEGER	-	-	x	0	-	-	x	-	-	-	-	-	-	-	x	-
vchrValue	varchar(255)	-	-	x		-	-	-	-	-	-	-	x	-	-	-	-
txtValueQual	LONGVARCHAR	-	-	-		-	-	-	-	-	-	-	-	-	-	-	-
bitUseInReport	tinyint	-	-	-		-	-	-	-	-	-	-	-	-	-	-	-

## Foreign Keys

Name	Import	On Update	On Delete
intKeywordTypeID	tblKeywordType(intKeywordTypeID)	NO ACTION	NO ACTION

## 8.10. tblKeywordType

Authority table holding information about valid keywords and the categories they belong to.

### See Also

tblKeyword

### Field Summary

Name	Type	Description
intKeywordTypeID	INTEGER	
vchrKeywordType	varchar-255	
intCategoryID	INTEGER	
sortorder	INTEGER	

### Sql Summary

Name	Type	Pr Ke y	Un q	Not N	Def	Aut oIn cr	Bin	Un Sig n	Zer oFi ll	MU nq	Idx 1	Ud x1	Idx 1	Idx 2	Idx 3	Idx 4	Idx 5
intKeywordTypeID	INTEGER	x	-	-	0	-	-	-	-	-	-	-	-	-	-	-	-
vchrKeywordType	varchar(255)	-	-	x		-	-	-	-	-	-	-	-	-	-	-	-
intCategoryID	INTEGER	-	-	-		-	-	-	-	-	-	-	x	-	-	-	-
sortorder	INTEGER	-	-	-		x	-	-	-	-	-	-	-	x	-	-	-

## 8.11. tblRefLink

The citation of a reference in an arbitrary table.

### Field Summary

Name	Type	Description
<i>intRefLinkTypeID</i>	tblRefLinkType(intRefLinkTypeID)	
intCatID	INTEGER	
intIntraCatID	INTEGER	
<i>intRefID</i>	tblReference(intRefID)	
vchrRefPage	char	
txtRefQual	LONGVARCHAR	
intOrder	INTEGER	
bitUseInReport	tinyint	
GUID	LONGVARBINARY	
<b>intRefLinkID</b>	INTEGER	
id	INTEGER	

## Sql Summary

Name	Type	Pr Key	Un q	Not N	Def	Aut incr	Bin	Un Sig n	Zer oFi ll	MU nq	Idx 1	Ud x1	Idx 1	Idx 2	Idx 3	Idx 4	Idx 5
<i>intRefLinkTypeID</i>	INTEGER	-	-	x	0	-	-	-	x	-	-	-	-	-	-	-	x
intCatID	INTEGER	-	-	x	0	-	-	-	-	-	-	-	x	-	-	-	-
intIntraCatID	INTEGER	-	-	x	0	x	-	-	-	-	-	-	-	x	-	-	-
<i>intRefID</i>	INTEGER	-	-	x	0	-	x	-	-	-	-	-	-	-	x	-	-
vchrRefPage	char(1)	-	-	-		-	-	-	-	-	-	-	-	-	-	-	-
txtRefQual	LONGVARCH AR	-	-	-		-	-	-	-	-	-	-	-	-	-	-	-
intOrder	INTEGER	-	-	-		-	-	-	-	-	-	-	-	-	-	-	-
bitUseInReport	tinyint	-	-	-		-	-	-	-	-	-	-	-	-	-	-	-
GUID	LONGVARB INARY	-	-	-		-	-	-	-	-	-	-	-	-	-	-	-
<b>intRefLinkID</b>	INTEGER	x	-	x	0	-	-	x	-	-	-	-	-	-	-	x	-
id	INTEGER	-	-	-		-	-	-	-	-	-	-	-	-	-	-	-

## Foreign Keys

Name	Import	On Update	On Delete
intRefLinkTypeID	tblRefLinkType(intRefLinkTypeID)	NO ACTION	NO ACTION
intRefID	tblReference(intRefID)	NO ACTION	NO ACTION

## 8.12. tblRefLinkType

Authority file holding information about kinds of reference links.

### See Also

tblRefLink

### Field Summary

Name	Type	Description
intRefLinkTypeID	INTEGER	
vchrRefLinkType	varchar-255	
intCategoryID	INTEGER	
GUID	LONGVARBINARY	

### Sql Summary

Name	Type	Pr Ke y	Un q	Not N	Def	Aut oIn cr	Bin	Un Sig n	Zer oFi ll	MU nq	Idx 1	Ud x1	Idx 1	Idx 2	Idx 3	Idx 4	Idx 5
intRefLinkTypeID	INTEGER	x	-	x	0	-	-	-	-	-	-	-	-	-	-	-	-
vchrRefLinkType	varchar(255)	-	-	x		-	-	-	-	-	-	-	-	-	-	-	-
intCategoryID	INTEGER	-	-	-		-	-	-	-	-	-	-	-	-	-	-	-
GUID	LONGVARBINARY	-	-	-		-	-	-	-	-	-	-	-	-	-	-	-

## 8.13. tblReference

Bibliographic information about references

**See Also**

tblALN  
tblIGAN  
tblRefLink  
tblISAN

Field Summary		
Name	Type	Description
intRefID	INTEGER	
vchrRefCode	char	
vchrAuthor	varchar-255	
vchrTitle	varchar-255	
vchrBookTitle	varchar-255	
vchrEditor	varchar-255	
vchrRefType	VARCHAR20	
vchrYearOfPub	text	
vchrActualDate	char	
intJournalID	tblJournal(intJournalID)	
vchrPartNo	char	
vchrSeries	char	
vchrPublisher	VARCHAR200	
vchrPlace	VARCHAR200	
vchrVolume	char	
vchrPages	char	
vchrTotalPages	char	
vchrPossess	char	
vchrSource	char	
vchrEdition	char	
vchrISBN	VARCHAR30	
vchrISSN	VARCHAR30	
txtAbstract	LONGVARCHAR	
txtFullText	LONGVARCHAR	
txtFullRTF	LONGVARCHAR	
intStartPage	INTEGER	

intEndPage	INTEGER	
GUID	LONGVARBINARY	
vchrWhoCreated	char	
dtDateCreated	TIMESTAMP19	
vchrWhoLastUpdated	char	
dtDateLastUpdated	TIMESTAMP19	
vchrText	varchar-255	

## Sql Summary

Name	Type	Pr Ke y	Un q	Not N	Def	Aut oIn cr	Bin	Un Sig n	Zer oFi ll	MU nq	Idx 1	Ud x1	Idx 1	Idx 2	Idx 3	Idx 4	Idx 5
intRefID	INTEGER	x	-	x	0	-	-	-	-	-	-	x	-	-	-	-	-
vchrRefCode	char(1)	-	-	x		-	-	-	-	-	-	-	-	-	-	-	-
vchrAuthor	varchar(255)	-	-	-		-	-	-	-	-	-	-	-	-	-	-	-
vchrTitle	varchar(255)	-	-	-		-	-	-	-	-	-	-	-	-	-	-	-
vchrBookTitle	varchar(255)	-	-	-		-	-	-	-	-	-	-	-	-	-	-	-
vchrEditor	varchar(255)	-	-	-		-	-	-	-	-	-	-	-	-	-	-	-
vchrRefType	varchar(20)	-	-	-		-	-	-	-	-	-	-	-	-	-	-	-
vchrYearOfPub	text	-	-	-		-	-	-	-	-	-	-	x	-	-	-	-
vchrActualDate	char(1)	-	-	-		-	-	-	-	-	-	-	-	-	-	-	-
intJournalID	INTEGER	-	-	-		x	-	-	-	-	-	-	-	x	-	-	-
vchrPartNo	char(1)	-	-	-		-	-	-	-	-	-	-	-	-	-	-	-
vchrSeries	char(1)	-	-	-		-	-	-	-	-	-	-	-	-	-	-	-
vchrPublisher	varchar(200)	-	-	-		-	-	-	-	-	-	-	-	-	-	-	-
vchrPlace	varchar(200)	-	-	-		-	-	-	-	-	-	-	-	-	-	-	-
vchrVolume	char(1)	-	-	-		-	-	-	-	-	-	-	-	-	-	-	-
vchrPages	char(1)	-	-	-		-	-	-	-	-	-	-	-	-	-	-	-
vchrTotalPages	char(1)	-	-	-		-	-	-	-	-	-	-	-	-	-	-	-
vchrPossess	char(1)	-	-	-		-	-	-	-	-	-	-	-	-	-	-	-
vchrSource	char(1)	-	-	-		-	-	-	-	-	-	-	-	-	-	-	-
vchrEdition	char(1)	-	-	-		-	-	-	-	-	-	-	-	-	-	-	-
vchrISBN	varchar(30)	-	-	-		-	-	-	-	-	-	-	-	-	-	-	-
vchrISSN	varchar(30)	-	-	-		-	-	-	-	-	-	-	-	-	-	-	-
txtAbstract	LONGVARC	-	-	-		-	-	-	-	-	-	-	-	-	-	-	-

## Sql Summary

Name	Type	Pr Key	Un q	Not N	Def	Aut oln cr	Bin	Un Sig n	Zer oFi ll	MU nq	Idx 1	Ud x1	Idx 1	Idx 2	Idx 3	Idx 4	Idx 5
	HAR																
txtFullText	LONGVARCHAR	-	-	-		-	-	-	-	-	-	-	-	-	-	-	-
txtFullRTF	LONGVARCHAR	-	-	-		-	-	-	-	-	-	-	-	-	-	-	-
intStartPage	INTEGER	-	-	-		-	-	-	-	-	-	-	-	-	-	-	-
intEndPage	INTEGER	-	-	-		-	-	-	-	-	-	-	-	-	-	-	-
GUID	LONGVARBINARY	-	-	-		-	-	-	-	-	-	-	-	-	-	-	-
vchrWhoCreated	char(1)	-	-	-		-	-	-	-	-	-	-	-	-	-	-	-
dtDateCreated	timestamp(19)	-	-	-		-	-	-	-	-	-	-	-	-	-	-	-
vchrWhoLastUpdated	char(1)	-	-	-		-	-	-	-	-	-	-	-	-	-	-	-
dtDateLastUpdated	timestamp(19)	-	-	-		-	-	-	-	-	-	-	-	-	-	-	-
vchrText	varchar(255)	-	-	-		-	-	-	-	-	-	-	-	-	-	-	-

## Foreign Keys

Name	Import	On Update	On Delete
intJournalID	tblJournal(intJournalID)	NO ACTION	NO ACTION

## 8.14. tblSAN

Information about available names of species rank.

## Field Summary

Name	Type	Description
intBiotaID	tblBiota(intBiotaID)	
intRefID	tblReference(intRefID)	

vchrRefPage	char	
txtRefQual	LONGVARCHAR	
vchrPrimaryType	char	
vchrSecondaryType	char	
bitPrimaryTypeProbable	tinyint	
bitSecondaryTypeProbable	tinyint	
GUID	LONGVARBINARY	

## Sql Summary

Name	Type	Pr Ke y	Un q	Not N	Def	Aut oIn cr	Bin	Un Sig n	Zer oFi ll	MU nq	Idx 1	Ud x1	Idx 1	Idx 2	Idx 3	Idx 4	Idx 5
<i>intBiotalID</i>	INTEGER	-	-	x	0	-	-	-	-	-	-	-	-	-	-	-	-
<i>intRefID</i>	INTEGER	-	-	-		-	-	-	-	-	-	-	-	-	-	-	-
vchrRefPage	char(1)	-	-	-		-	-	-	-	-	-	-	-	-	-	-	-
txtRefQual	LONGVARC HAR	-	-	-		-	-	-	-	-	-	-	-	-	-	-	-
vchrPrimaryTyp e	char(1)	-	-	-		-	-	-	-	-	-	-	-	-	-	-	-
vchrSecondary Type	char(1)	-	-	-		-	-	-	-	-	-	-	-	-	-	-	-
bitPrimaryType Probable	tinyint	-	-	x	0	-	-	-	-	-	-	-	-	-	-	-	-
bitSecondaryTy peProbable	tinyint	-	-	x	0	-	-	-	-	-	-	-	-	-	-	-	-
GUID	LONGVARB INARY	-	-	-		-	-	-	-	-	-	-	-	-	-	-	-

## Foreign Keys

Name	Import	On Update	On Delete
intBiotalID	tblBiota(intBiotalID)	NO ACTION	NO ACTION
intRefID	tblReference(intRefID)	NO ACTION	NO ACTION



## 8.15. tblSANTypeData

Some information about type specimens associated with available names.

Field Summary		
Name	Type	Description
intSANTypeDataID	INTEGER	
intBiotalID	tblBiota(intBiotalID)	
vchrType	char	
vchrMuseum	varchar-255	
vchrAccessionNum	char	
vchrMaterial	char	
vchrLocality	varchar-255	
bitIDConfirmed	tinyint	
GUID	LONGVARBINARY	
intMaterialID	INTEGER	Unused in the IndoPacific Mollusc Project

Sql Summary																	
Name	Type	Pr Ke y	Un q	Not N	Def	Aut oIn cr	Bin	Un Sig n	Zer oFi ll	MU nq	Idx 1	Ud x1	Idx 1	Idx 2	Idx 3	Idx 4	Idx 5
intSANTypeDataID	INTEGER	x	-	x	0	-	-	-	-	-	-	-	-	-	-	-	-
intBiotalID	INTEGER	-	-	x	0	-	-	-	-	-	-	-	-	-	-	-	-
vchrType	char(1)	-	-	-		-	-	-	-	-	-	-	-	-	-	-	-
vchrMuseum	varchar(255)	-	-	-		-	-	-	-	-	-	-	-	-	-	-	-
vchrAccessionNum	char(1)	-	-	-		-	-	-	-	-	-	-	-	-	-	-	-
vchrMaterial	char(1)	-	-	-		-	-	-	-	-	-	-	-	-	-	-	-
vchrLocality	varchar(255)	-	-	-		-	-	-	-	-	-	-	-	-	-	-	-
bitIDConfirmed	tinyint	-	-	x	0	-	-	-	-	-	-	-	-	-	-	-	-
GUID	LONGVARBINARY	-	-	-		-	-	-	-	-	-	-	-	-	-	-	-
intMaterialID	INTEGER	-	-	-		-	-	-	-	-	-	-	-	-	-	-	-

## Foreign Keys

Name	Import	On Update	On Delete
intBiotalID	tblBiota(intBiotalID)	NO ACTION	NO ACTION

## 8.16. tblSANTypeDataType

Authority table holding allowed kinds of species type data.

## Field Summary

Name	Type	Description
chrKingdomCode	VARCHAR5	
vchrPrimaryType	char	
vchrSecondaryTypes	VARCHAR250	
GUID	LONGVARBINARY	

## Sql Summary

Name	Type	Pr Ke y	Un q	Not N	Def	Aut oIn cr	Bin	Un Sig n	Zer oFi ll	MU nq	Idx 1	Ud x1	Idx 1	Idx 2	Idx 3	Idx 4	Idx 5
chrKingdomCode	varchar(5)	-	-	x		-	-	-	-	-	-	-	-	-	-	-	-
vchrPrimaryType	char(1)	-	-	x		-	-	-	-	-	-	-	-	-	-	-	-
vchrSecondaryTypes	varchar(250)	-	-	x		-	-	-	-	-	-	-	-	-	-	-	-
GUID	LONGVARBINARY	-	-	-		-	-	-	-	-	-	-	-	-	-	-	-